



B.U.D.S BULLETIN

BRP Utility and Diagnostic Software

- SKI-DOO®
- LYNX®
- SEA-DOO®
- CAN-AM® ATV
- CAN-AM® SSV
- CAN-AM® ROADSTER

December, 2014

Subject: **B.U.D.S. Installation Instructions**

No.

N/A

REVISION 1

September, 2015

TABLE OF CONTENTS

| | Page | Page |
|--|----------|------|
| GUIDELINES | 2 | |
| Minimum System Requirements..... | 2 | |
| B.U.D.S. Software..... | 2 | |
| DOWNLOADING B.U.D.S. AND DRIVER | 2 | |
| B.U.D.S. IXXAT DRIVERS INSTALLATION | 2 | |
| B.U.D.S. INSTALLATION | 3 | |
| Installation A | 3 | |
| Installation B | 5 | |
| USING B.U.D.S. | 6 | |
| First Time Use With a New MPI-3 Interface Card | 6 | |
| Getting a B.U.D.S. Access Code | 7 | |
| Starting B.U.D.S. | 7 | |

GUIDELINES

All current BRP Utility and Diagnostic Software (B.U.D.S.) versions must be used on a specific product line only. The Legacy version covers all units up to and including model year 2006.

Minimum System Requirements

Minimum requirement for PC or laptop:

- 100 MB of hard disk space
- Windows XP or newer
- One unused USB port.

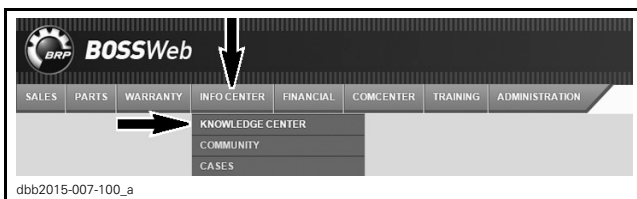
B.U.D.S. Software

You can install B.U.D.S. application on a computer that has access to Internet as well as on a computer that does not have access to Internet. However in both cases, you will need to download B.U.D.S. software using a computer with Internet access.

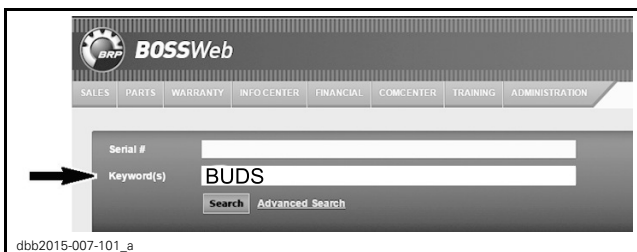
NOTE: B.U.D.S. requires the installation of the latest version of the VCI (IXXAT) drivers. Please follow carefully the instructions below.

DOWNLOADING B.U.D.S. AND DRIVER

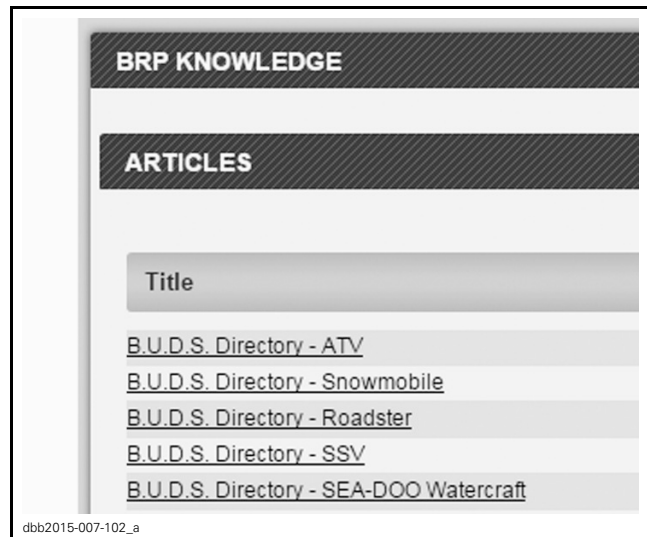
1. Login to your BOSSWeb account.
2. Navigate to the Knowledge Center.



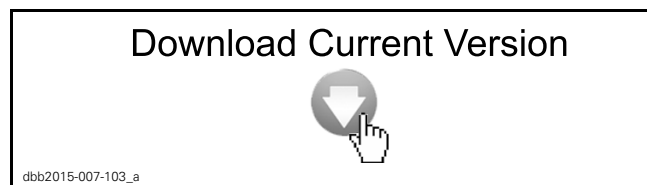
3. Enter keyword(s): "BUDS" and click the search button.



4. The results should look like the following image.
 - 4.1 If they don't, reload the web page and try again.



5. Select the B.U.D.S. directory for your product line.
6. Click on arrow to download the current B.U.D.S. version.



NOTE: BRP will release new versions of B.U.D.S. over time.

7. On the same page, under **Related Downloads**, download the following files:
 - 7.1 B.U.D.S. IXXAT drivers
 - 7.2 Getting an access code on BOSSWeb
8. Once the downloads are complete, proceed with the following installation procedure.

B.U.D.S. IXXAT DRIVERS INSTALLATION

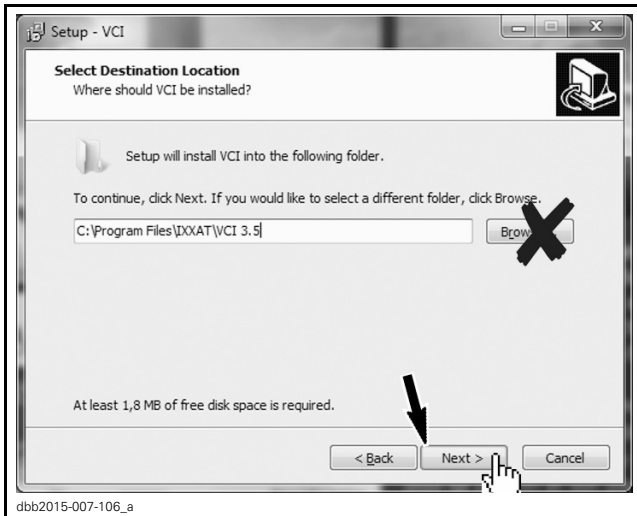
The IXXAT driver allows your computer to communicate with the .MPI-3 INTERFACE CARD (P/N 529 036 353)



1. Double click on the previously downloaded IXXAT drivers VCI icon to start the installation.



2. Follow the instructions on screen.
3. Whenever prompted, **always install in the default directory.**



DO NOT CHANGE DEFAULT INSTALLATION DIRECTORY

Overwrite any previous IXXAT driver versions

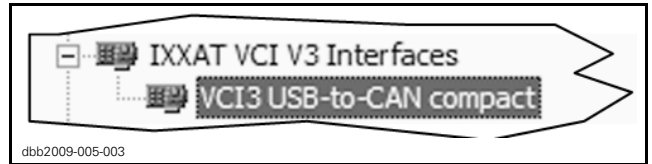
4. Reboot the computer.
5. After the reboot of the computer, connect the MPI-3 INTERFACE CARD (P/N 529 036 353) in an unused USB port and verify if it is detected by Windows.

The USB light on the MPI card should come on.



If the USB light does not come on:

- Go to hardware / device manager found in the Control Panel
- Remove any IXXAT (VCI) devices, by right mouse clicking and remove hardware
- Unplug and plug back in MPI-3 INTERFACE CARD (P/N 529 036 353)
- ...and let Windows auto-detect the new drivers.



B.U.D.S. INSTALLATION

NOTE: To install or uninstall programs you will need administrator rights for the computer you are on.

According to the B.U.D.S. version to install, use the appropriate instructions designated for.

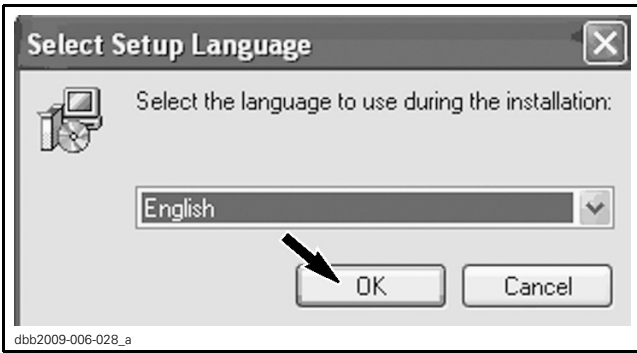
| VERSION | INSTRUCTIONS |
|-----------------|--------------------|
| B.U.D.S. Sx.x.x | Use Installation A |
| B.U.D.S. Wx.x.x | |
| B.U.D.S. Ax.x.x | |
| B.U.D.S. Rx.x.x | |
| B.U.D.S. Cx.x.x | |
| B.U.D.S. L3.x.x | Use Installation B |

Installation A

1. Double click on the previously downloaded BUDS.EXE file

NOTE: If the file has been saved on an USB key, move the .EXE file to the computer.

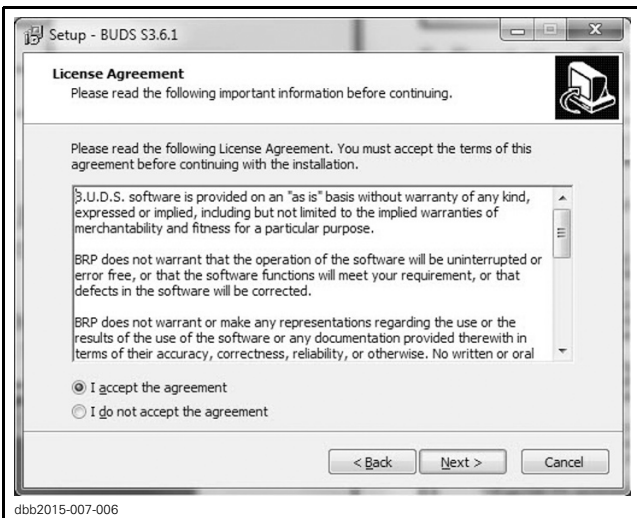
2. Click on the "OK" button to confirm the language selection.



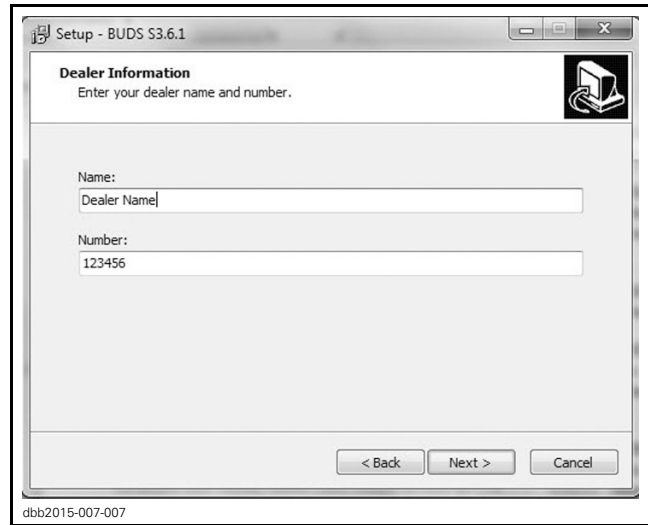
3. Read the Welcome screen instructions.
4. Click the "Next" button".



5. Read the Software License Agreement then click the "NEXT" button.



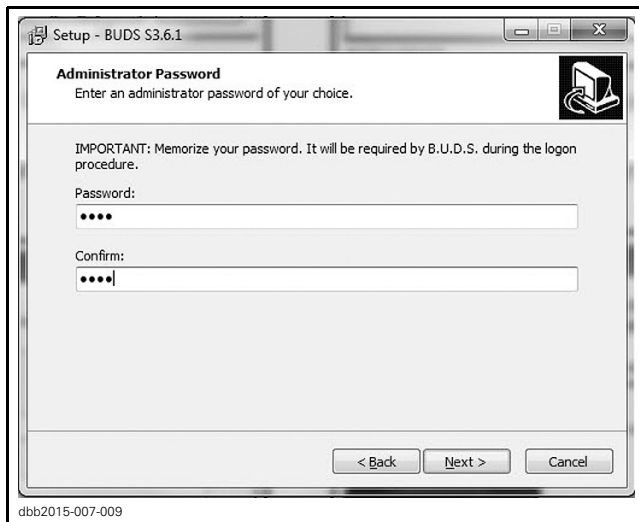
6. Type your Dealer Name and Number.
7. Click the "Next" button".



8. Type a user name of your choice, for example your nickname.
9. Type also your first name and last name.
10. Click the "Next" button.



11. Type a password of your choice.
- NOTE:** Remember your password since you will need it every time you log into B.U.D.S. If you forget your password, you will have to reinstall B.U.D.S.
12. Confirm your password.
 13. Click the "Next" button".



Wait while "SETUP" installs B.U.D.S. on your computer.

14. Once the installation is completed, "click" on Finish.



Installation B

This section concerns BUDS Legacy L3.3.0. Install this version to connect to Sea-Doo and Ski-Doo Model year (MY) 2006 and older.

1. Double click on the .EXE file icon (the one previously downloaded) on your desktop to start the installation.

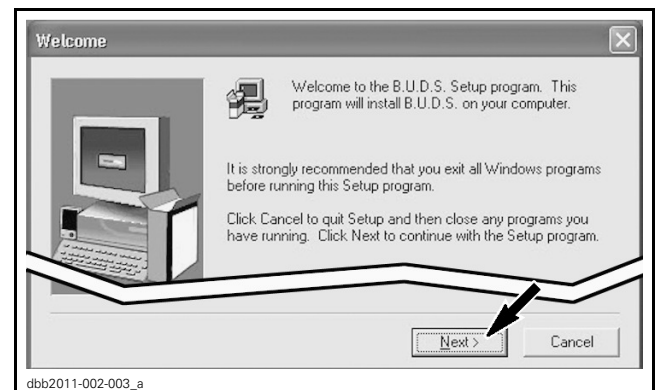


2. Click on the "OK" button to confirm the language selection.

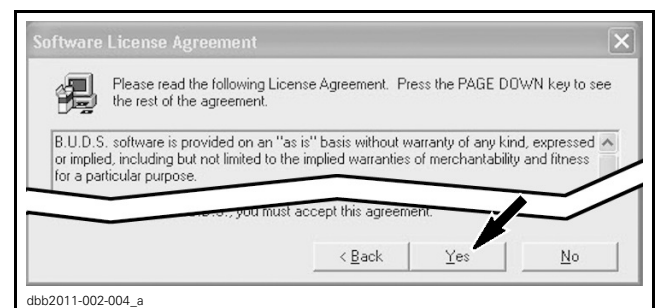


3. Read the Welcome screen instructions.

4. Click the "Next" button".

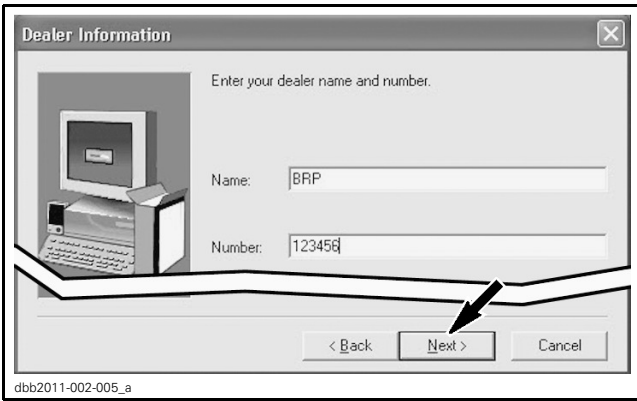


5. Read the Software License Agreement then click the "Yes" button.

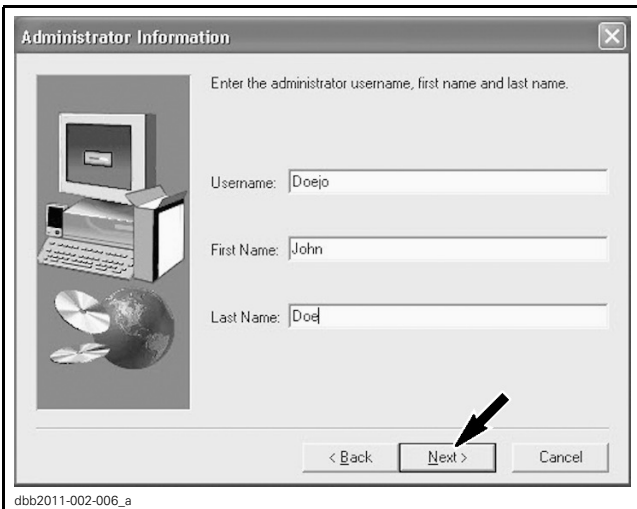


6. Type your Dealer Name and Number.

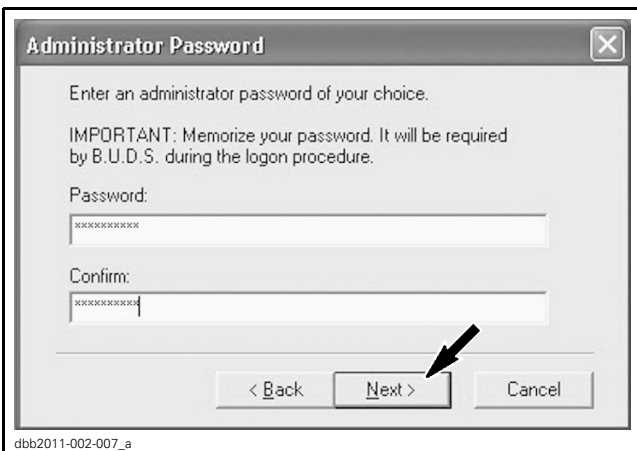
7. Click the "Next" button.



8. Type a user name of your choice, for example your nickname.
9. Type also your first name and last name.
10. Click the "Next" button.

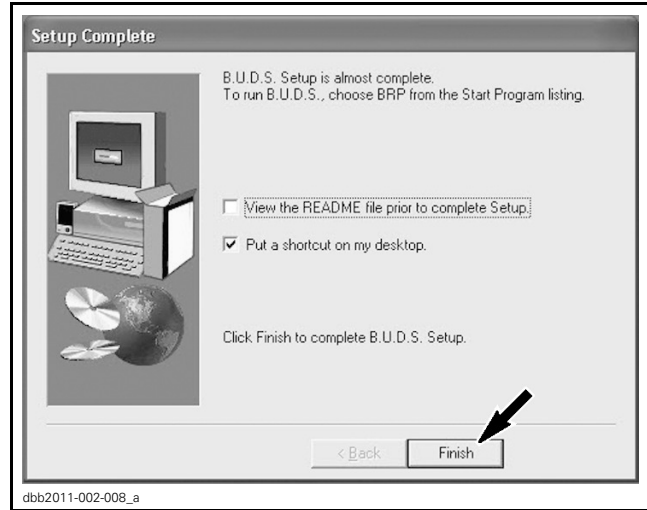


11. Type a password of your choice.
- NOTE:** Remember your password since you will need it every time you log into B.U.D.S. If you forget your password, you will have to reinstall B.U.D.S.
12. Confirm your password.
 13. Click the "Next" button.



Wait while "SETUP" installs B.U.D.S. on your computer

14. Once the installation is completed, "click" on Finish.



USING B.U.D.S.

Refer to the BRP B.U.D.S. chart available in the B.U.D.S. directory on Knowledge Center to identify the B.U.D.S. version and hardware to use to connect to a specific vehicle.

To start the software, double click on the new B.U.D.S. icon on your desktop.



First Time Use With a New MPI-3 Interface Card

Each first time you use B.U.D.S. with a new MPI card, it will request an Access Code to allow its use.

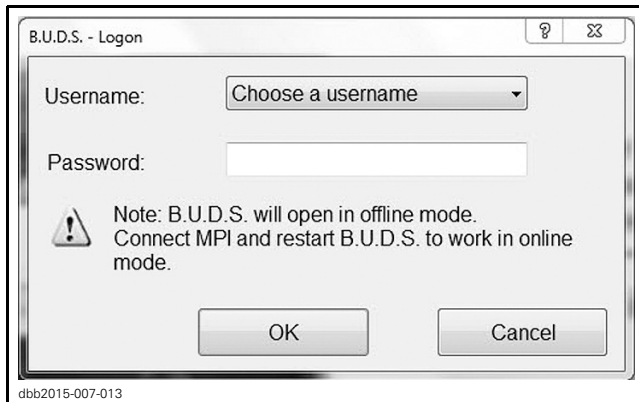


Getting a B.U.D.S. Access Code

Refer to the previously downloaded: [Getting a access code on BOSSWeb](#) document.

Starting B.U.D.S.

1. During program initialization, B.U.D.S. tries to communicate with the MPI interface card. If B.U.D.S. can't find it on any of the computer's ports, it displays the following screen:

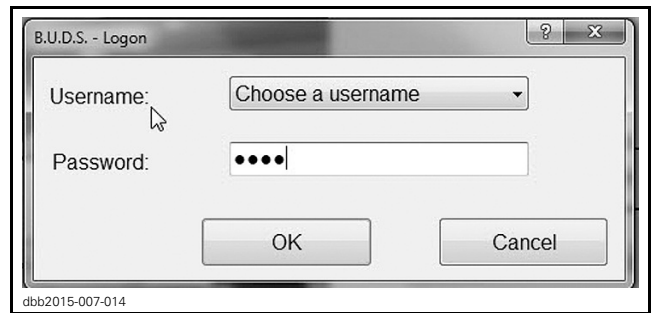


- If you select "Cancel", B.U.D.S. terminates.
- If you select "OK", B.U.D.S. runs in Demo mode. In this mode, saved files can be read and printed.

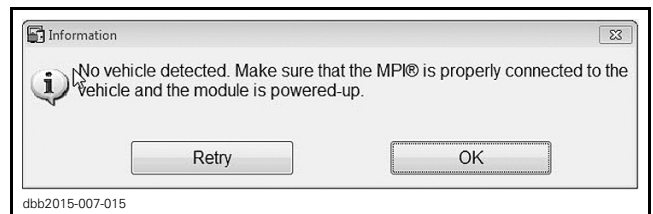
NOTE: To connect to a vehicle from demo mode, connect a MPI card and restart B.U.D.S.

2. Enter the user name and password you previously entered to finally access the software.

If your MPI card is recognized, logon screen will look like this:



3. If you have no vehicle connected to the MPI-3 interface card or if the vehicle is not powered-up, B.U.D.S. will display this screen at startup.



NOTE: The "Retry" caption will try to detect the vehicle again. If you still want to be in demo mode, press OK.